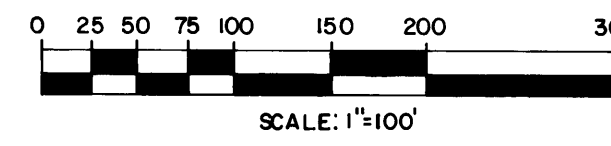


PLAT NO. 5 SAILFISH POINT P.U.D.

LYING IN FRACTIONAL SECTIONS 8 AND 17, TOWNSHIP 38 SOUTH, RANGE 42 EAST, MARTIN COUNTY, FLORIDA

DECEMBER, 1981



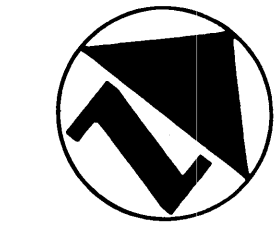
SHEET 2 OF 3

I, LOUISE V. ISAACS,
CLERK OF THE CIRCUIT
COURT OF MARTIN COUNTY,
FLORIDA, HEREBY CERTIFY
THAT THIS PLAT WAS FILED
FOR RECORD IN PLAT
BOOK 8, PAGE 89
MARTIN COUNTY, FLORIDA,
PUBLIC RECORDS, THIS
DAY OF _____,
A.D. 1981.

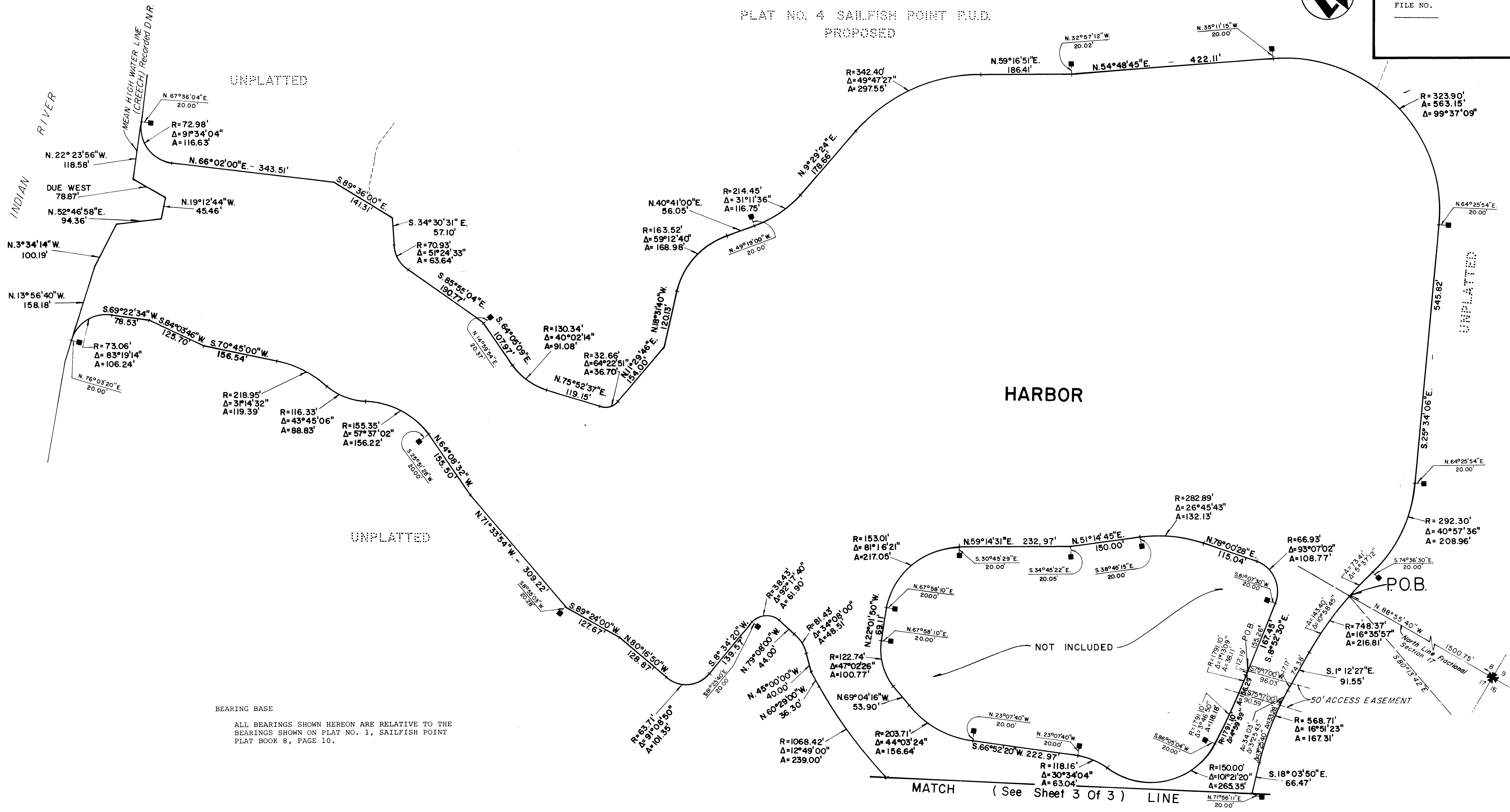
LOUISE V. ISAACS, CLERK
CIRCUIT COURT
MARTIN COUNTY, FLORIDA

BY _____
DEPUTY CLERK

FILE NO. _____



PLAT NO. 4 SAILFISH POINT P.U.D.
PROPOSED



BEARING BASE
ALL BEARINGS SHOWN HEREON ARE RELATIVE TO THE
BEARINGS SHOWN ON PLAT NO. 1, SAILFISH POINT
PLAT BOOK 8, PAGE 10.

■ = P.R.M. (Permanent Reference Monument)

LINDAHL BROWNING, FERRARI & HELLSTROM, INC.
Consulting Engineers, Planners & Surveyors
426 INDIAN TOWN ROAD SUITE 100, JUPITER, FLORIDA 33458
951 COLORADO AVENUE SUITE 100, STUART, FLORIDA 33494